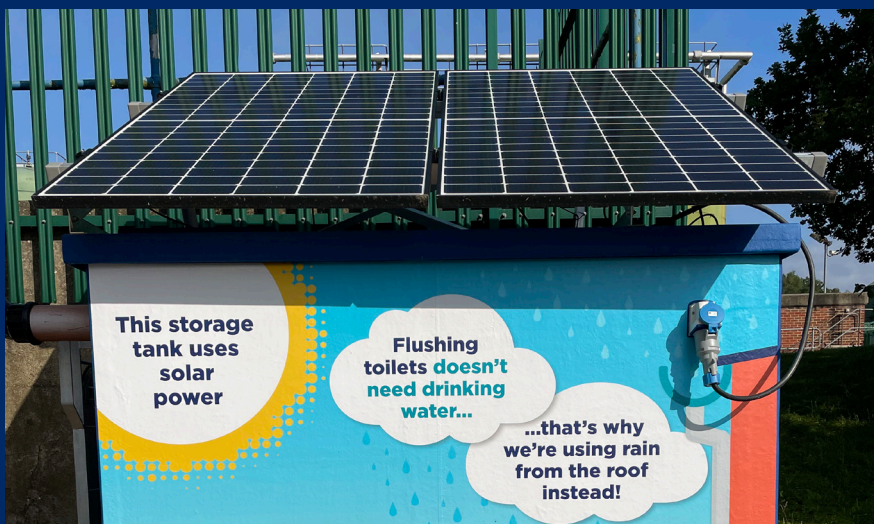
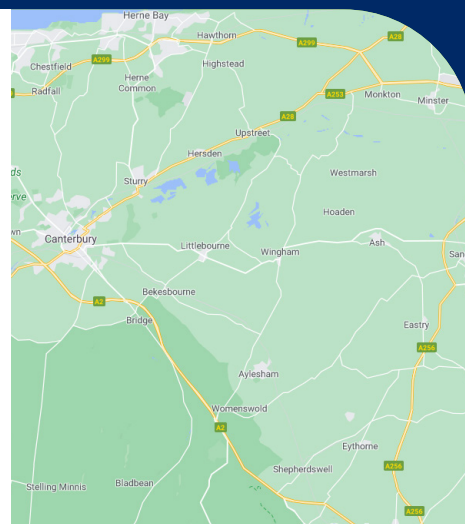


CASE STUDY

Education centre



Location: Kent | England



Tank Size:
3,000L

Sector:
Education

Applications:
WC's

System specification:
StormStation

Commissioned:
2021

Potential Rainfall Collection:
741m³

Stormsaver were contracted to install our compact, self-contained StormStation in a popular education centre in Kent. As well as supplying rainwater for non-potable use, the system acts a legacy to inspire future generations.

We were approached by a forward-thinking water company who wanted to display their sustainability credentials to visitors and staff at their education centre. Stormsaver were able to offer the client a robust solution in the form of our popular StormStation, recommended where there is relatively little demand for non-potable water across a site. In this case, the client wanted StormStation to act as a showcase to display the importance of water conservation, made possible through an above ground design.

Our reliable StormStation product has allowed the client to benefit from ease of installation. A 'plug and play' design helped mechanical and electrical contractors to retrofit the system into the existing building. StormStation's compact design allowed the client to access benefits included in a traditional rainwater harvesting system, all in a smaller format. There is potential for 75% savings on mains water bills.

An optional solar panel package means the education centre continually benefits from our system, in terms of both reduced electricity costs and potential carbon reduction opportunities. Our system acts as a showcase to inspire future generations to consider ways they can contribute to a more sustainable future.